



**GENERAL PURPOSE  
(ORDINARY) LOCATION**

**CY AND YY SERIES OF ROOM AIR CONDITIONERS AND HEAT PUMPS**

<b>CAB</b>	<b>LCAB</b>	<b>HACAB</b>	<b>RMP/AMP</b>	<b>CC</b>	<b>CY/YY</b>	<b>RVP</b>	<b>CUSTOM</b>	<b>CU</b>
------------	-------------	--------------	----------------	-----------	--------------	------------	---------------	-----------

Custom Controls provides the petro-chemical and offshore industries with HVAC equipment of the highest quality and reliability on the market at an economical price. Both the CY and YY series of air conditioners and heat pumps are ideal for use in manufacturing, offices, containers, small operator shelters and other non-hazardous locations. Unit sizes range from 8,000 BTUH to 36,000 BTUH for air conditioners and 10,000 BTUH to 24,000 BTUH for heat pumps.

**FEATURES:**

- Environment Friendly refrigerant – R410A
- Aluminum fin/copper tube coils for maximum heat transfer
- Fully insulated chamber for quiet operation
- Washable filters
- Complete recirculation of indoor air
- Totally enclosed fan motor
- High efficiency compressors

**OPTIONS:**

- Industrial cabinet coatings
- 50 Hz operation
- Steam or electric heat
- Copper fin/copper tube coils
- 316 Stainless steel cabinet and frame
- Auto changeover thermostat (for heat pumps and steam or electric heat)
- Alarm for loss of air flow





**GENERAL PURPOSE  
(ORDINARY) LOCATION**

-60 HZ -  
R-410A REFRIGERANT

(1 of 2)

**CY AND YY SERIES OF ROOM AIR CONDITIONERS AND HEAT PUMPS**

CAB	LCAB	HACAB	RMP/AMP	CC	CY/YY	RVP	CUSTOM	CU
-----	------	-------	---------	----	-------	-----	--------	----

**ROOM AIR CONDITIONERS**

MODEL	CY08-G-1	CY12-G-1	CY14-G-1	CY12-G-2
COOLING CAPACITY (BTUH)	7,900	12,000	14,000	11700/11200
POWER SUPPLY	115-1-60	115-1-60	115-1-60	230/208-1-60
COOLING AMPS	6.1	11.3	12	4.8/4.9
COOLING WATTS	677	1220	1444	1026/982
CIRCUIT BREAKER OR T-D FUSE	15	15	15	15
ROOM SIDE AIR (CFM)	265	277	325	275
SLEEVE	A	B	A	A
WEIGHT (LBS)(PROX)	119	95	136	132

**ROOM AIR CONDITIONERS (continued)**

MODEL	CY18-G-2	CY24-G-2	CY28-G-2	CY36-G-2
COOLING CAPACITY (BTUH)	18000/17640	24000/23500	27800/27000	36000/35700
POWER SUPPLY	230/208-1-60	230/208-1-60	230/208-1-60	230/208-1-60
COOLING AMPS	8.4/8.9	13.0/14.0	13.5/14.4	19.0/20.5
COOLING WATTS	1860/1820	2830/2770	2865/2812	4235/4200
CIRCUIT BREAKER OR T-D FUSE	15	20	20	30
ROOM SIDE AIR (CFM)	518	482	600	725
SLEEVE	C	D	E	E
WEIGHT (LBS)(PROX)	143	172	213	232

**ROOM HEAT PUMPS**

MODEL	YY10-G-1	YY12-G-2	YY18-G-2	YY24-G-2
COOLING CAPACITY (BTUH)	9500	12000/11600	18000/17600	24000/23500
HEATING CAPACITY (BTUH)	7500	11000/8700	11000/8700	11000/8700
POWER SUPPLY	115-1-60	230/208-1-60	230/208-1-60	230/208-1-60
COOLING AMPS	7.8	5.5/5.9	8.4/8.9	13.0/14.0
COOLING WATTS	812	1230/1180	1860/1820	2830/2770
HEATING AMPS	7.6	16.0/14.6	16.0/15.6	16.0/15.6
HEATING WATTS	743	3575/2765	3680/3030	3680/3030
CIRCUIT BREAKER OR T-D FUSE	15	20	20	20
ROOM SIDE AIR (CFM)	285	271	506	471
SLEEVE	A	F	C	D
WEIGHT (LBS)(PROX)	129	123	148	177



**CY AND YY SERIES OF ROOM AIR CONDITIONERS AND HEAT PUMPS**

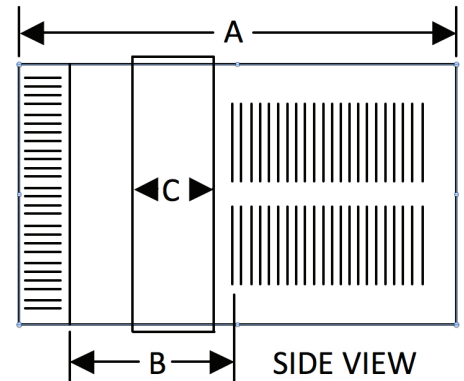
CAB	LCAB	HACAB	RMP/AMP	CC	CY/YY	RVP	CUSTOM	CU
-----	------	-------	---------	----	-------	-----	--------	----

**ROOM AIR CONDITIONER DIMENSIONS AND CUTOUT REQUIREMENTS**

SLEEVE SIZE	HEIGHT	WIDTH	DEPTH WITH FRONT "A"	SHELL DEPTH TO LOUVERS "B"	WALL FINISHED CUTOUT		MAX WALL DEPTH "C"
					HEIGHT	WIDTH	
A	15 15/16	25 15/16	29	8 3/4	16 3/16	26 3/16	7 3/8
B	14 1/2	19	21 1/4	**	14 3/4	19 1/4	**
C	17 3/4	23 5/8	24	**	18	23 7/8	**
D	18 5/8	26 1/2	26 2/4	**	18 7/8	26 3/4	**
E	20 3/16	28	35 1/2	16 1/2	20 3/8	28 1/4	15 1/8
F	15 1/4	22 5/8	23 5/8	**	15 1/2	22 7/8	**

**NOTES:**

1. HEAT PUMP RATINGS ARE AT 47° F. AMBIENT.
2. DO NOT OPERATE HEAT PUMPS BELOW 35° F. AMBIENT TEMPERATURES.
3. SPECIFICATIONS ARE SUBJECT TO CHANGE WITHOUT NOTICE, 6-25-11.
4. CONSULT FACTORY FOR DIMENSIONS.
5. MAXIMUM ALLOWABLE SIZE HACR TYPE CIRCUIT BREAKERS OR FUSES LISTED ABOVE FOR EQUIPMENT.
6. INSTALLATION WIRING MUST CONFORM TO THE NATIONAL ELECTRICAL CODE AS WELL AS ALL LOCAL AND STATE CODES.





**HAZARDOUS LOCATION**  
 CLASS I, DIVISION 2, GROUPS B, C, & D  
 CLASS II, DIVISION 1, GROUPS E, F, & G  
 OPERATING TEMPERATURE CODE  
 T3B, 329°F. (165°C.)  
 T3C, 320°F. (160°C.)

**CY AND YY SERIES OF ROOM AIR CONDITIONERS AND HEAT PUMPS**

CAB	LCAB	HACAB	RMP/AMP	CC	CY/YY	RVP	CUSTOM	CU
-----	------	-------	---------	----	-------	-----	--------	----

Custom Controls provides the petro-chemical and offshore industries with HVAC equipment of the highest quality and reliability on the market at an economical price. Both the CY and YY series of air conditioners and heat pumps are ideal for use in analyzer shelters, containers, chemical storage facilities, offshore platforms and small operator shelters. Unit sizes range from 8,000 BTUH to 36,000 BTUH for air conditioners and 10,000 BTUH to 24,000 BTUH for heat pumps.

**FEATURES:**

- Compliance to NEC Article 500 & 505 standards
- Spark free construction
- Environment Friendly refrigerant – R410A
- Intrinsically safe thermostat
- Aluminum fin/copper tube coils for maximum heat transfer
- Conduit seals not required for installation
- Fully insulated chamber for quiet operation
- Washable filters
- Complete recirculation of indoor air
- Totally enclosed fan motor
- High efficiency compressors

**OPTIONS:**

- BLYGOLD PoluAl coil Coatings
- Industrial cabinet coatings
- 50 Hz operation
- Steam or electric heat
- Copper fin/copper tube coils
- 316 Stainless steel cabinet and frame
- Auto changeover thermostat (for heat pumps and steam or electric heat)
- Alarm for loss of air flow
- CSA or ATEX certifications
- Division 2 electric heat
- Split division from indoor to outdoor section
- Compliance to IEC European standards for Zone 2 applications





**HAZARDOUS LOCATION**  
 CLASS I, DIVISION 2, GROUPS B, C, & D OUTDOORS  
 GENERAL PURPOSE (UNCLASSIFIED) INDOORS  
 OPERATING TEMPERATURE CODE  
 T3C, 320°F. (160°C) OUTDOORS - 60 HZ -  
 R-410A REFRIGERANT

(1 of 1)

**CY SERIES OF ROOM AIR CONDITIONERS WITH ELECTRIC HEAT**

CAB	LCAB	HACAB	RMP/AMP	CC	CY/YY	RVP	CUSTOM	CU
-----	------	-------	---------	----	-------	-----	--------	----

**ROOM AIR CONDITIONERS**

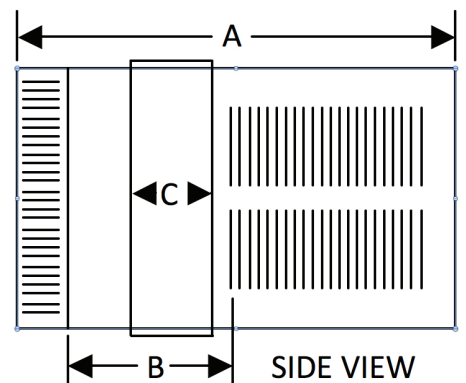
MODEL	CY12-B2-G-1-3.5G	CY18-B2-G-2-3.6	CY24-B2-G-2-3.6	CY36-B2-G-2-4.6
COOLING CAPACITY (BTUH)	11700/11200	17500/17200	23500/23300	36000/35700
POWER SUPPLY	230/208-1-60	230/208-1-60	230/208-1-60	230/208-1-60
COOLING AMPS	4.8/4.9	7.4/8.0	11.2/11.9	19.0/20.5
COOLING WATTS	1026/982	1635/1617	2500/2479	4235/4200
HEATING AMPS	16.0/14.7	19.5/17.0	19.5/17.0	24.0/22.4
HEATING WATTS	3500/2900	4200/3500	4200/3500	5500/4650
CIRCUIT BREAKER OR T-D FUSE	20	30	30	30
ROOM SIDE AIR (CFM)	275	350	390	725
SLEEVE	A	G	G	E
WEIGHT (LBS)(PROX)	133	141	153	232

**ROOM AIR CONDITIONER DIMENSIONS AND CUTOUT REQUIREMENTS**

SLEEVE SIZE	HEIGHT	WIDTH	DEPTH WITH FRONT "A"	SHELL DEPTH TO LOUVERS "B"	WALL FINISHED CUTOUT		MAX WALL DEPTH "C"
					HEIGHT	WIDTH	
A	15 15/16	25 15/16	29	8 3/4	16 3/16	26 3/16	7 3/8
B	14 1/2	19	21 1/4	**	14 3/4	19 1/4	**
C	17 3/4	23 5/8	24	**	18	23 7/8	**
D	18 5/8	26 1/2	26 2/4	**	18 7/8	26 3/4	**
E	20 3/16	28	35 1/2	16 1/2	20 3/8	28 1/4	15 1/8
F	15 1/4	22 5/8	23 5/8	**	15 1/2	22 7/8	**
G	17 15/16	25 15/16	29	8 3/4	18 3/16	26 3/16	7 3/8

**NOTES:**

- HEAT PUMP RATINGS ARE AT 47° F. AMBIENT.
- DO NOT OPERATE HEAT PUMPS BELOW 35° F. AMBIENT TEMPERATURES.
- SPECIFICATIONS ARE SUBJECT TO CHANGE WITHOUT NOTICE, 6-25-11.
- CONSULT FACTORY FOR DIMENSIONS.
- MAXIMUM ALLOWABLE SIZE HACR TYPE CIRCUIT BREAKERS OR FUSES LISTED ABOVE FOR EQUIPMENT.
- INSTALLATION WIRING MUST CONFORM TO THE NATIONAL ELECTRICAL CODE AS WELL AS ALL LOCAL AND STATE CODES.





**HAZARDOUS LOCATION**  
 CLASS I, DIVISION 2, GROUPS B, C, & D  
 OPERATING TEMPERATURE CODE  
 T3C, 320°F. (160°C) - 60 HZ -  
 R-410A REFRIGERANT

(1 of 2)

**CY AND YY SERIES OF ROOM AIR CONDITIONERS AND HEAT PUMPS**

CAB	LCAB	HACAB	RMP/AMP	CC	CY/YY	RVP	CUSTOM	CU
-----	------	-------	---------	----	-------	-----	--------	----

**ROOM AIR CONDITIONERS**

MODEL	CY08-B2-1	CY12-B2-1	CY14-B2-1	CY12-B2-2
COOLING CAPACITY (BTUH)	7,900	12,000	14,000	11700/11200
POWER SUPPLY	115-1-60	115-1-60	115-1-60	230/208-1-60
COOLING AMPS	6.1	11.3	12	4.8/4.9
COOLING WATTS	677	1220	1444	1026/982
CIRCUIT BREAKER OR T-D FUSE	15	15	15	15
ROOM SIDE AIR (CFM)	265	277	325	275
SLEEVE	A	B	A	A
WEIGHT (LBS)(PROX)	119	95	136	132

**ROOM AIR CONDITIONERS (continued)**

MODEL	CY18-B2-2	CY24-B2-2	CY28-B2-2	CY36-B2-2
COOLING CAPACITY (BTUH)	18000/17640	24000/23500	27800/27000	36000/35700
POWER SUPPLY	230/208-1-60	230/208-1-60	230/208-1-60	230/208-1-60
COOLING AMPS	8.4/8.9	13.0/14.0	13.5/14.4	19.0/20.5
COOLING WATTS	1860/1820	2830/2770	2865/2812	4235/4200
CIRCUIT BREAKER OR T-D FUSE	15	20	20	30
ROOM SIDE AIR (CFM)	518	482	600	725
SLEEVE	C	D	E	E
WEIGHT (LBS)(PROX)	143	172	213	232

**ROOM HEAT PUMPS**

MODEL	YY10-B2-1	YY12-B2-2	YY18-B2-2	YY24-B2-2
COOLING CAPACITY (BTUH)	9500	12000/11600	18000/17600	24000/23500
HEATING CAPACITY (BTUH)	7500	11000/8700	11000/8700	11000/8700
POWER SUPPLY	115-1-60	230/208-1-60	230/208-1-60	230/208-1-60
COOLING AMPS	7.8	5.5/5.9	8.4/8.9	13.0/14.0
COOLING WATTS	812	1230/1180	1860/1820	2830/2770
HEATING AMPS	7.6	16.0/14.6	16.0/15.6	16.0/15.6
HEATING WATTS	743	3575/2765	3680/3030	3680/3030
CIRCUIT BREAKER OR T-D FUSE	15	20	20	20
ROOM SIDE AIR (CFM)	285	271	506	471
SLEEVE	A	F	C	D
WEIGHT (LBS)(PROX)	129	123	148	177



**HAZARDOUS LOCATION**  
 CLASS I, DIVISION 2, GROUPS B, C, & D  
 OPERATING TEMPERATURE CODE  
 T3C, 320°F. (160°C) - 60 HZ -  
 R-410A REFRIGERANT

(2 of 2)

**CY AND YY SERIES OF ROOM AIR CONDITIONERS AND HEAT PUMPS**

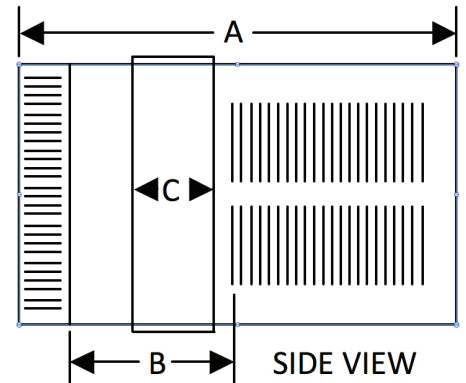
CAB	LCAB	HACAB	RMP/AMP	CC	CY/YY	RVP	CUSTOM	CU
-----	------	-------	---------	----	-------	-----	--------	----

**ROOM AIR CONDITIONER DIMENSIONS AND CUTOUT REQUIREMENTS**

SLEEVE SIZE	HEIGHT	WIDTH	DEPTH WITH FRONT "A"	SHELL DEPTH TO LOUVERS "B"	WALL FINISHED CUTOUT		MAX WALL DEPTH "C"
					HEIGHT	WIDTH	
A	15 15/16	25 15/16	29	8 3/4	16 3/16	26 3/16	7 3/8
B	14 1/2	19	21 1/4	**	14 3/4	19 1/4	**
C	17 3/4	23 5/8	24	**	18	23 7/8	**
D	18 5/8	26 1/2	26 2/4	**	18 7/8	26 3/4	**
E	20 3/16	28	35 1/2	16 1/2	20 3/8	28 1/4	15 1/8
F	15 1/4	22 5/8	23 5/8	**	15 1/2	22 7/8	**

**NOTES:**

1. HEAT PUMP RATINGS ARE AT 47° F. AMBIENT.
2. DO NOT OPERATE HEAT PUMPS BELOW 35° F. AMBIENT TEMPERATURES.
3. SPECIFICATIONS ARE SUBJECT TO CHANGE WITHOUT NOTICE, 6-25-11.
4. CONSULT FACTORY FOR DIMENSIONS.
5. MAXIMUM ALLOWABLE SIZE HACR TYPE CIRCUIT BREAKERS OR FUSES LISTED ABOVE FOR EQUIPMENT.
6. INSTALLATION WIRING MUST CONFORM TO THE NATIONAL ELECTRICAL CODE AS WELL AS ALL LOCAL AND STATE CODES.





**HAZARDOUS LOCATION**  
 CLASS I, DIVISION 2, GROUPS B, C, & D OUTDOORS  
 CLASS I, DIVISION 1, GROUPS B, C, & D INDOORS  
 OPERATING TEMPERATURE CODE  
 T3C, 320°F. (160°C.) -60 HZ -  
 R-410A REFRIGERANT

(1 of 2)

**CY AND YY SERIES OF ROOM AIR CONDITIONERS AND HEAT PUMPS**

CAB	LCAB	HACAB	RMP/AMP	CC	CY/YY	RVP	CUSTOM	CU
-----	------	-------	---------	----	-------	-----	--------	----

**ROOM AIR CONDITIONERS**

MODEL	CY08-B2-B1-1	CY12-B2-B1-1	CY14-B2-B1-1	CY12-B2-B1-2
COOLING CAPACITY (BTUH)	7,900	12,000	14,000	11700/11200
POWER SUPPLY	115-1-60	115-1-60	115-1-60	230/208-1-60
COOLING AMPS	6.1	11.3	12	4.8/4.9
COOLING WATTS	677	1220	1444	1026/982
CIRCUIT BREAKER OR T-D FUSE	15	15	15	15
ROOM SIDE AIR (CFM)	265	277	325	275
SLEEVE	A	B	A	A
WEIGHT (LBS)(PROX)	119	95	136	132

**ROOM AIR CONDITIONERS (continued)**

MODEL	CY18-B2-B1-2	CY24-B2-B1-2	CY28-B2-B1-2	CY36-B2-B1-2
COOLING CAPACITY (BTUH)	18000/17640	24000/23500	27800/27000	36000/35700
POWER SUPPLY	230/208-1-60	230/208-1-60	230/208-1-60	230/208-1-60
COOLING AMPS	8.4/8.9	13.0/14.0	13.5/14.4	19.0/20.5
COOLING WATTS	1860/1820	2830/2770	2865/2812	4235/4200
CIRCUIT BREAKER OR T-D FUSE	15	20	20	30
ROOM SIDE AIR (CFM)	518	482	600	725
SLEEVE	C	D	E	E
WEIGHT (LBS)(PROX)	143	172	213	232

**ROOM HEAT PUMPS**

MODEL	YY10-B2-B1-1	YY12-B2-B1-2	YY18-B2-B1-2	YY24-B2-B1-2
COOLING CAPACITY (BTUH)	9500	12000/11600	18000/17600	24000/23500
HEATING CAPACITY (BTUH)	7500	11000/8700	11000/8700	11000/8700
POWER SUPPLY	115-1-60	230/208-1-60	230/208-1-60	230/208-1-60
COOLING AMPS	7.8	5.5/5.9	8.4/8.9	13.0/14.0
COOLING WATTS	812	1230/1180	1860/1820	2830/2770
HEATING AMPS	7.6	16.0/14.6	16.0/15.6	16.0/15.6
HEATING WATTS	743	3575/2765	3680/3030	3680/3030
CIRCUIT BREAKER OR T-D FUSE	15	20	20	20
ROOM SIDE AIR (CFM)	285	271	506	471
SLEEVE	A	F	C	D
WEIGHT (LBS)(PROX)	129	123	148	177



**HAZARDOUS LOCATION**  
 CLASS I, DIVISION 2, GROUPS B, C, & D OUTDOORS  
 CLASS I, DIVISION 1, GROUPS B, C, & D INDOORS  
 OPERATING TEMPERATURE CODE  
 T3C, 320°F. (160°C.) -60 HZ -  
 R-410A REFRIGERANT

(2 of 2)

**CY AND YY SERIES OF ROOM AIR CONDITIONERS AND HEAT PUMPS**

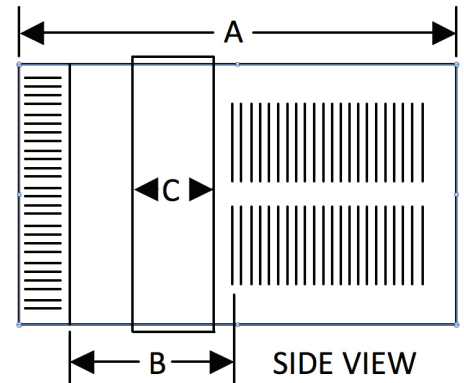
CAB	LCAB	HACAB	RMP/AMP	CC	CY/YY	RVP	CUSTOM	CU
-----	------	-------	---------	----	-------	-----	--------	----

**ROOM AIR CONDITIONER DIMENSIONS AND CUTOUT REQUIREMENTS**

SLEEVE SIZE	HEIGHT	WIDTH	DEPTH WITH FRONT "A"	SHELL DEPTH TO LOUVERS "B"	WALL FINISHED CUTOUT		MAX WALL DEPTH "C"
					HEIGHT	WIDTH	
A	15 15/16	25 15/16	29	8 3/4	16 3/16	26 3/16	7 3/8
B	14 1/2	19	21 1/4	**	14 3/4	19 1/4	**
C	17 3/4	23 5/8	24	**	18	23 7/8	**
D	18 5/8	26 1/2	26 2/4	**	18 7/8	26 3/4	**
E	20 3/16	28	35 1/2	16 1/2	20 3/8	28 1/4	15 1/8
F	15 1/4	22 5/8	23 5/8	**	15 1/2	22 7/8	**

**NOTES:**

- HEAT PUMP RATINGS ARE AT 47° F. AMBIENT.
- DO NOT OPERATE HEAT PUMPS BELOW 35° F. AMBIENT TEMPERATURES.
- SPECIFICATIONS ARE SUBJECT TO CHANGE WITHOUT NOTICE, 6-25-11.
- CONSULT FACTORY FOR DIMENSIONS.
- MAXIMUM ALLOWABLE SIZE HACR TYPE CIRCUIT BREAKERS OR FUSES LISTED ABOVE FOR EQUIPMENT.
- INSTALLATION WIRING MUST CONFORM TO THE NATIONAL ELECTRICAL CODE AS WELL AS ALL LOCAL AND STATE CODES.





**HAZARDOUS LOCATION**  
 CLASS I, DIVISION 1, GROUPS C, & D  
 OPERATING TEMPERATURE CODE  
 T3B, 329°F. (165°C) - 60 HZ -

(1 of 2)

**CY AND YY SERIES OF ROOM AIR CONDITIONERS AND HEAT PUMPS**

CAB	LCAB	HACAB	RMP/AMP	CC	CY/CY	RVP	CUSTOM	CU
-----	------	-------	---------	----	-------	-----	--------	----

**ROOM AIR CONDITIONERS**

MODEL	CY08-C1-1	CY12-C1-1	CY14-C1-1	CY12-C1-2	CY18-C1-2
COOLING CAPACITY (BTUH)	7,900	12,000	14,000	11700/11120	17500/17200
POWER SUPPLY	115-1-60	115-1-60	115-1-60	230/208-1-60	230/208-1-60
COOLING AMPS					
COOLING WATTS					
CIRCUIT BREAKER OR T-D FUSE					
ROOM SIDE AIR (CFM)	265	300	325	275	350
SLEEVE	S	S	S	S	M
WEIGHT (LBS)(PROX)					

**ROOM AIR CONDITIONERS (continued)**

MODEL	CY24-C1-2	CY28-C1-2	CY36-C1-2
COOLING CAPACITY (BTUH)	23500/23300	27800/27000	36000/35700
POWER SUPPLY	230/208-1-60	230/208-1-60	230/208-1-60
COOLING AMPS			
COOLING WATTS			
CIRCUIT BREAKER OR T-D FUSE			
ROOM SIDE AIR (CFM)	390	600	725
SLEEVE	M	L	L
WEIGHT (LBS)(PROX)			

**ROOM HEAT PUMPS**

MODEL	YY10-C1-1	YY12-C1-2	YY18-C1-2	YY24-C1-2
COOLING CAPACITY (BTUH)	9500	12100/12100	18200/17800	24000/23600
HEATING CAPACITY (BTUH)	7500	9400/9000	15500/15400	23500/23200
POWER SUPPLY	115-1-60	230/208-1-60	230/208-1-60	230/208-1-60
COOLING AMPS				
COOLING WATTS				
HEATING AMPS				
HEATING WATTS				
CIRCUIT BREAKER OR T-D FUSE				
ROOM SIDE AIR (CFM)	285	265	370	600
SLEEVE	S	S	M	L
WEIGHT (LBS)(PROX)				



**HAZARDOUS LOCATION**  
 CLASS 1, DIVISION 1, GROUPS C, & D  
 OPERATING TEMPERATURE CODE  
 T3B, 329°F. (165°C) - 60 HZ -

(2 of 2)

**CY AND YY SERIES OF ROOM AIR CONDITIONERS AND HEAT PUMPS**

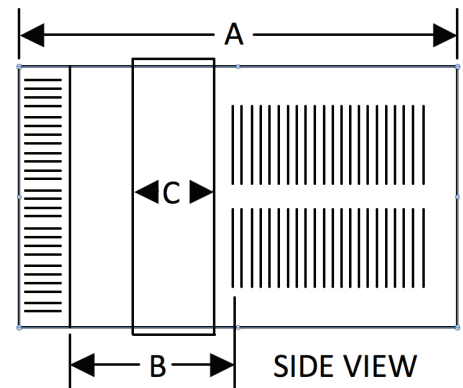
CAB	LCAB	HACAB	RMP/AMP	CC	CY/CY	RVP	CUSTOM	CU
-----	------	-------	---------	----	-------	-----	--------	----

**ROOM AIR CONDITIONER DIMENSIONS AND CUTOUT REQUIREMENTS**

SLEEVE SIZE	HEIGHT	WIDTH	DEPTH WITH FRONT "A"	SHELL DEPTH TO LOUVERS "B"	MIN EXTENSION INTO ROOM	WALL FINISHED CUTOUT		MAX WALL DEPTH "C"
						HEIGHT	WIDTH	
S	15 15/16	25 15/16	29	8 3/4	5 3/4	16 3/16	26 3/16	7 3/8
M	17 15/16	25 15/16	29	8 3/4	5 3/4	18 3/16	26 3/16	7 3/8
L			35 1/2	16 1/2	5 3/8	20 3/8	28 1/4	15 1/8

**NOTES:**

1. HEAT PUMP RATING ARE AT 47°F. AMBIENT
2. DO NOT OPERATE HEAT PUMPS BELOW 35°F. AMBIENT TEMPERATURES
3. SPECIFICATIONS ARE SUBJECT TO CHANGE WITHOUT NOTIC, 6-25-11





**HAZARDOUS LOCATION**  
 CLASS I, DIVISION 2, GROUPS B, C, & D  
 OPERATING TEMPERATURE CODE  
 T3C, 320°F. (160°C) - 50 HZ -

(1 of 1)

**CY SERIES OF ROOM AIR CONDITIONERS**

CAB	LCAB	HACAB	RMP/AMP	CC	CY/CY	RVP	CUSTOM	CU
-----	------	-------	---------	----	-------	-----	--------	----

**ROOM AIR CONDITIONERS**

MODEL	CY10-B2-6	CY14-B2-6	CY19-B2-6	CY23-B2-6	CY30-B2-6
COOLING CAPACITY (BTUH)	10,000	15,000	20,000	23,300	30,000
POWER SUPPLY	220-1-50	220-1-50	220-1-50	220-1-50	220-1-50
COOLING AMPS	4.8	7.4	11.2	13.5	19.0
COOLING WATTS	1,026	1,635	2,500	2,865	4,235
CIRCUIT BREAKER OR T-D FUSE	15	15	20	20	30
ROOM SIDE AIR (CFM)	275	325	390	600	725
SLEEVE	S	M	M	L	L
WEIGHT (LBS)(PROX)	132	160	172	213	232

**ROOM AIR CONDITIONER DIMENSIONS AND CUTOUT REQUIREMENTS**

SLEEVE SIZE	HEIGHT	WIDTH	DEPTH WITH FRONT "A"	SHELL DEPTH TO LOUVERS "B"	MIN EXTENSION INTO ROOM	WALL FINISHED CUTOUT		MAX WALL DEPTH "C"
						HEIGHT	WIDTH	
S	15 15/16	25 15/16	29	8 3/4	5 3/4	16 3/16	26 3/16	7 3/8
M	17 15/16	25 15/16	29	8 3/4	5 3/4	18 3/16	26 3/16	7 3/8
L	20 3/16	28	35 1/2	16 1/2	5 3/8	20 3/8	28 1/4	15 1/8

**NOTES:**

- SPECIFICATIONS ARE SUBJECT TO CHANGE WITHOUT NOTICE, 6-25-11.
- MAXIMUM ALLOWABLE SIZE HVAC TYPE CIRCUIT BREAKERS OR FUSES LISTED ABOVE FOR EQUIPMENT.
- INSTALLATION WIRING MUST CONFORM TO THE NATIONAL ELECTRICAL CODE AS WELL AS ALL LOCAL AND STATE CODES.

